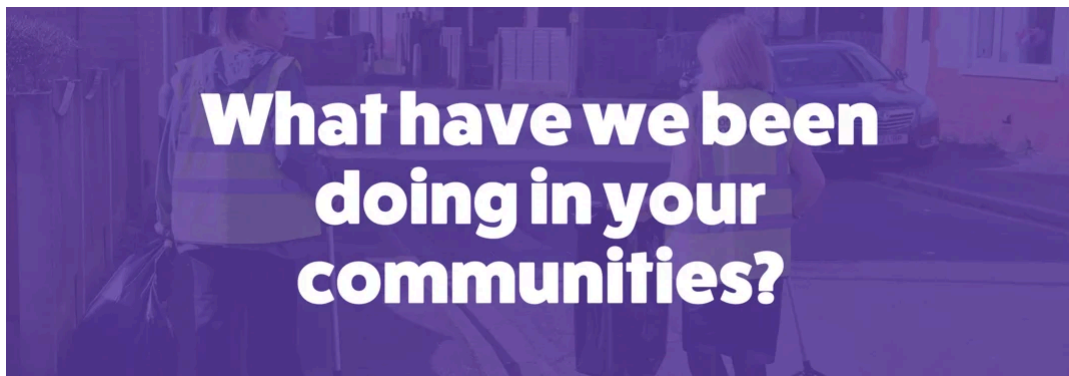




Welcome to **The Community Edit** - your monthly newsletter that lets you know what's going on in your neighbourhood and at Community Gateway.



Bringing Porter Street to Life

To celebrate 20 years of Community Gateway, we are delivering 20 community projects, and recently, we held an action day at Porter Street in Deepdale. Working with tenants, our teams addressed litter, fly-tipping and overgrown areas. To read more and sign up to get involved in future projects, [click here](#).



Tackling local issues in Ashton

We teamed up with children from Ashton Primary School to identify local issues including dog foul, litter and fly-tipping. The pupils created posters to promote community pride and responsible waste disposal that will be put up in the area. The project will continue as part of a wider initiative, [click here](#) to read more.

IMPROVING OUR SERVICES TOGETHER

At Community Gateway, we are committed to listening to tenants to understand your experiences and what matters most to you. We offer a range of involvement opportunities for you to have your voice heard and shape the services you receive.

[Click here](#) to see our latest infographic on what we have achieved together between October - December 2025 by listening to tenants and using your feedback to improve our services.



Shape your Space is coming to Brookfield and Fishwick this month. If you live in these areas, this is your chance to share your ideas, get involved and tell us what matters most to you in your local community. Help us to make your area cleaner, greener and safer.



Shape your Space Brookfield

15th April - [Click here to book a place](#)



Shape your Space Brookfield

21st April - [Click here to book a place](#)

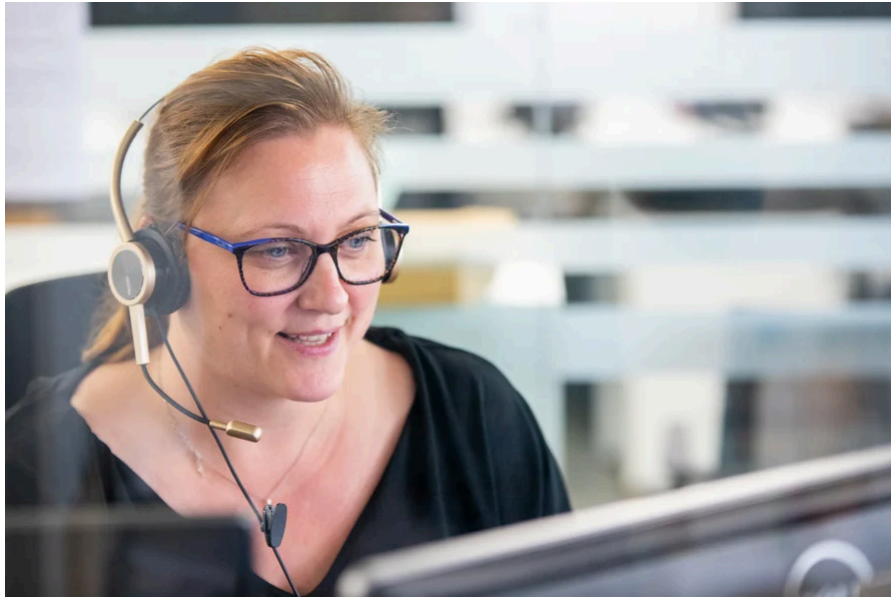
COMING SOON!

Our Spring edition of Gateway News is making its way to you! In this edition, we are pleased to share what our teams have been up to, what's going on in your communities and how the tenant voice shapes everything we do.

We hope you enjoy reading this year's Spring edition, you can share your feedback with us by scanning the QR code on the back and completing the survey.



MAKING OUR SERVICES WORK FOR YOU



We are committed to delivering excellent customer service that is inclusive, respectful and responsive to everyone in our communities. To help us tailor our services to your individual needs, we are asking all tenants to let us know if you have a disability or condition that you would like to make us aware of and any adjustments you may need.

[Click here to read more.](#)

DO YOU HAVE AN AIR SOURCE HEAT PUMP?

Air Source Heat Pumps are installed in all of our homes built after 2025.



An Air Source Heat Pump provides heating and hot water for your home without the need for gas. Air Source Heat Pumps work a little differently to traditional heating systems, but once you understand how they work, they can keep your home warm all year round. We have updated our website with short videos that share simple tips on how to get the most from your system and explain what happens when we come to service your Air Source Heat Pump. To watch the videos [click here](#).

WHAT'S ON IN YOUR NEIGHBOURHOOD

Take a look what's on in and around your neighbourhood this month and during the Easter half term holidays

- [Places kids can eat for free or £1 this half term. Find out more](#)
 - [Face painters and Easter Bunny - Preston Markets. Find out more](#)
 - [Curious Creators sessions for children aged 3-9 - The Harris. Find out more](#)
 - [Easter Monday Egg rolling at Avenham and Miller Parks. Find out more](#)
 - [Activities with Friends of Savick Library. Find out more](#)
 - [Events at The Harris Library. Find out more](#)
 - [Half term activities in Blackpool. Find out more](#)
-

TELL US WHAT YOU WOULD LIKE TO SEE

This newsletter is designed for you, so we want to make sure we are including information that you find useful.

Please could you spare a few minutes and complete our short survey, letting us know what you like about our current newsletter and what else you would like to see us include?

[Click here and share your views](#) 

To read an accessible version of our April newsletter, or read it in a different language, please [click here](#).

Community Gateway Association, Harbour House, Port Way, Preston, Lancashire
PR2 2DW, United Kingdom, 0800 953 0213

[Manage preferences](#)